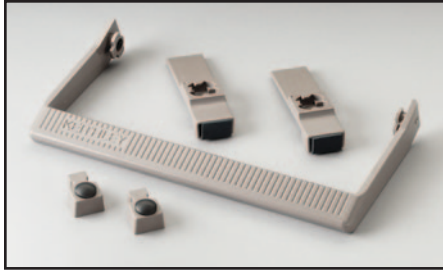
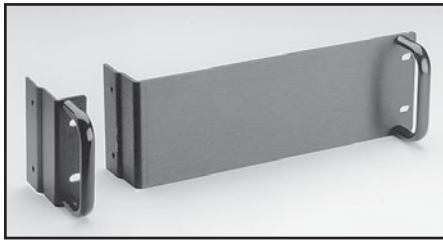


Bench Kits, Rack Mount Kits



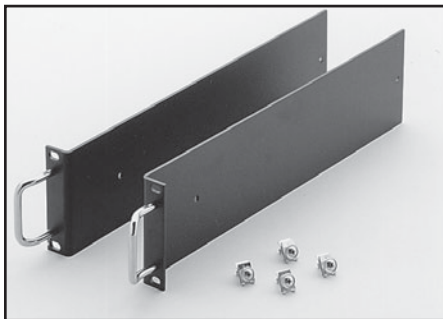
Model 2000-Benchkit: Benchtop Restore Kit. Rubber feet and carrying handles are removed during rack mounting. These items can be used with any of the following models to convert it back to benchtop instrument.

For use with: 428-PROG, Series 2000, 2182A, Series 2300, Series 2400, Series 2500, 2700, 2701, 6220, 6221, 6430, 6485, 6487, 6514, 6517A, 6517B, 7001, Series 2600, Series 2600A



Model 248-RMK-* Fixed Rack Mount Kit: Enables rack mounting of Model 248. 248-RMK-1 rack mounts one Model 248. 248-RMK-2 (not pictured) rack mounts two Model 248s side by side.

For use with: 248



Model 1938 Fixed Rack Mount Kit: Consists of two flanged brackets and hardware for mounting the Model 237 in a standard 48.3cm (19 in) equipment cabinet. Can be used with Models 8000, 8000-10, or 8000-14. 89mm (3½ in) height.

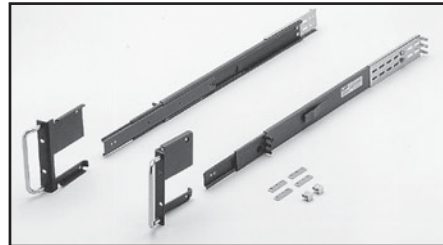
For use with: 237

SELECTOR GUIDE: RACK MOUNT KITS

Instrument	Single Fixed	Single Slide ¹	Dual Fixed	Type of Mount
428-PROG Series 2500 6485				
Series 2000 2700 6487			4288-2 ²	Side
2182A 2701 6514			4288-4 ³	Side
Series 2300 6220 6517A		4288-1	4288-5 ⁴	Shelf
Series 2400 6221 6517B			4288-9 ⁴	Shelf
6430 7001				
Series 2100	4299-3		4299-4	
Series 2600 Series 2600A	4299-1		4299-2	Side
2750	4288-7			Rear bracket
Series 3700	4288-10			Rear bracket
237	1938	1939		Bracket w/handles
248	248-RMK-1		248-RMK-2	Side
707A	Included	7079		Side
708A	Included			Side
4200-SCS/C or /F	4200-RM			
7002	7002-RMK-1	7002-RMK-2		Bracket w/handles

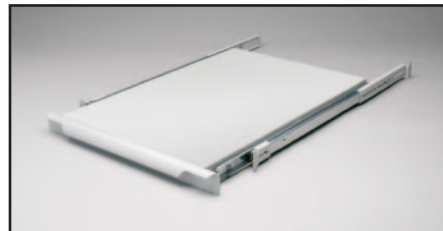
NOTES

- Slide rack mount kits are not compatible with equipment cabinet Models 8000-10, 8000-14, and 8000-17.
- Model 4288-2 mounts any two of the listed models, except 776.
- Model 4288-4 mounts: ANY ONE plus ANY ONE
230, 230-1 428-PROG, 486, 487, Series 2000, 2182A, Series 2300, Series 2400, Series 2500, 2700, 2701, 6220, 6221, 6430, 6485, 6487, 6514, 6517A, 6517B, 7001
- Models 4288-5 and 4288-9 mount any one or two of the listed models on a shelf-type mount.



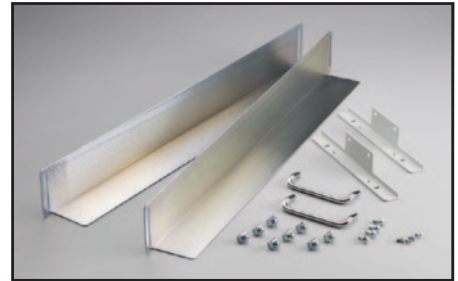
Model 1939 Slide Rack Mount Kit: Consists of two sets of flanged brackets, equipment slides, and hardware for mounting the Model 237 in a standard 48.3cm (19 in) equipment cabinet. Can be used with Model 8000. 89mm (3¼ in) height.

For use with: 237



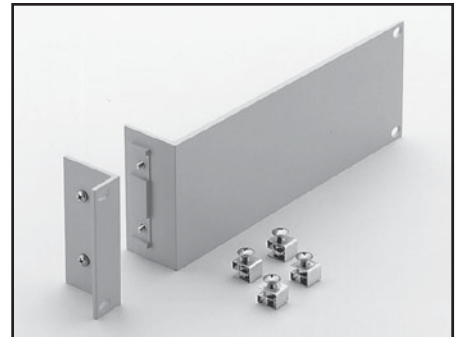
Model 4200-KEY-RM: Rack mount kit for cabinet mounting of standard keyboard and pointing devices.

For use with: 4200-SCS



Model 4200-RM: Fixed rack mount kit for cabinet mounting of the 4200-SCS.

For use with: 4200-SCS



Model 4288-1 Fixed Rack Mount Kit: Single-unit rack mount kit. Height: 88mm (3½ in).

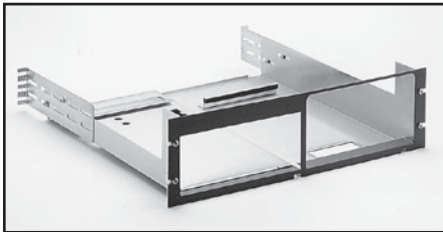
For use with: See Selector Guide.

Rack Mount Kits



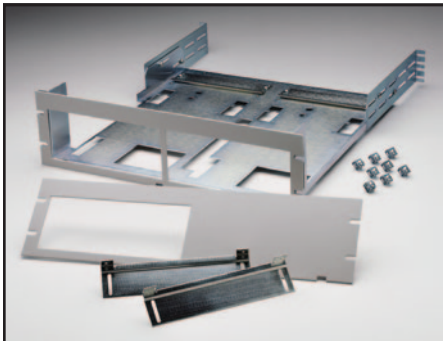
Model 4288-2 Fixed Rack Mount Kit: Enables rack mounting of the following models. Height: 88mm (3½ in).

For use with: See Selector Guide.



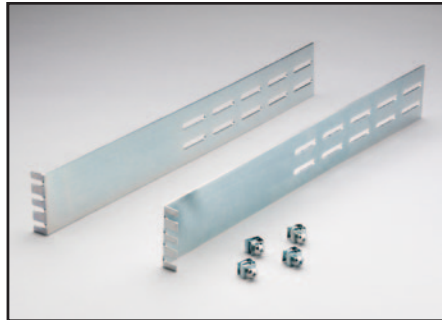
Model 4288-4 Fixed Rack Mount Kit: Enables rack mounting of one Model 220, 224, 230, 263, or 595 next to one 428-PROG, 486, 487, 776, Series 2000, 2182A, Series 2300, Series 2400, Series 2600, 2700, 2701, 6220, 6221, 6514, 6485, 6487, 6517A, 6517B, or 7001.

For use with: See Selector Guide.



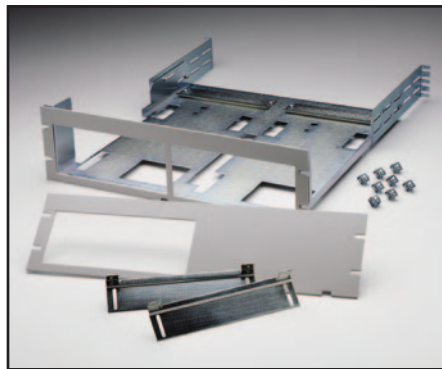
Model 4288-5 Fixed Rack Mount Kit: The single- and dual-instrument front panels included enable rack mounting of either one or two 3½-inch instruments. Height: 132mm (5¼ in). Depth: 457mm(18 in).

For use with: See Selector Guide.



Model 4288-7 Rear Support Mount Kit: For rack mount applications where more than one or two card modules are installed to provide added support for the rear of the mainframe. Note that front rack mounting hardware is supplied with the Model 2750 mainframe. 88mm (3.5 in) height.

For use with: 2750



Model 4288-9 Fixed Rack Mount Kit: Shelf style rack mount kit with single- and dual-instrument front plates provided. Also included are extended rear support brackets and hardware for installation.

For use with: See Selector Guide.



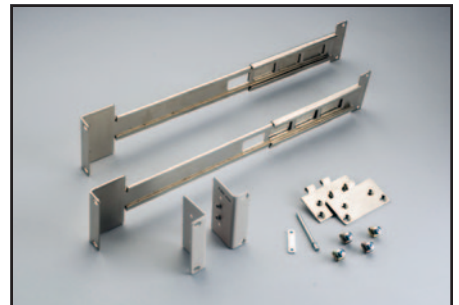
Model 4288-10 Rear Support Mount Kit: For rack mount applications where more than one or two card modules are installed to provide added support for the rear of the mainframe. Note that front rack mounting hardware is supplied with the Model 3706 mainframe. 88mm (3.5 in) height.

For use with: 3706, 3706-NFP, 3706-S, 3706-SNFP



Model 4299-1: Heavy duty, single rack mount kit with front and rear support. Height: 88mm (3.5 in).

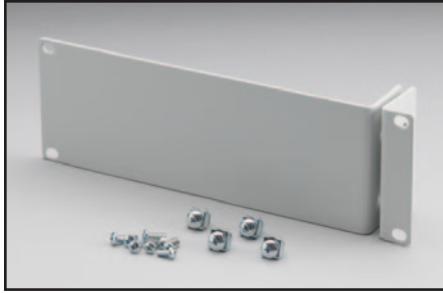
For use with: Series 2600, Series 2600A



Model 4299-2: Heavy duty, dual rack mount kit with front and rear support. Height: 88mm (3.5 in).

For use with: Series 2600, Series 2600A

Rack Mount Kits



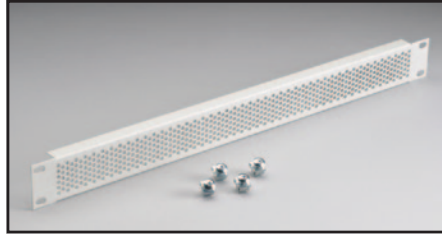
Model 4299-3 Universal Single Unit Rack Mount Kit: Includes all required hardware to rack mount a single Keithley or Agilent half rack instrument using front panel only mounting into a standard 19 inch equipment rack. Not compatible with Series 2600A. 88mm (3.5 in) height.

For use with: Half rack instruments (excluding Series 2600 and Series 2600A)



Model 4299-4 Universal Dual Unit Rack Mount Kit: Includes all required hardware to rack mount two Keithley and/or Agilent half rack instruments together using front panel only mounting into a standard 19 inch equipment rack. Not compatible with Series 2600. 88mm (3.5 in) height.

For use with: Half rack instruments (excluding Series 2600 and Series 2600A)



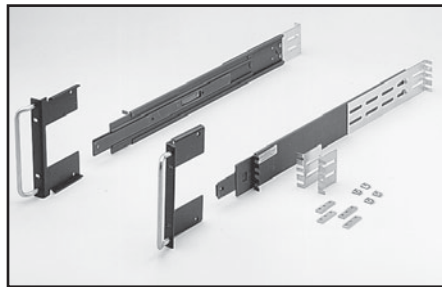
Model 4299-5: 1U vent panel.

For use with: Series 2600A



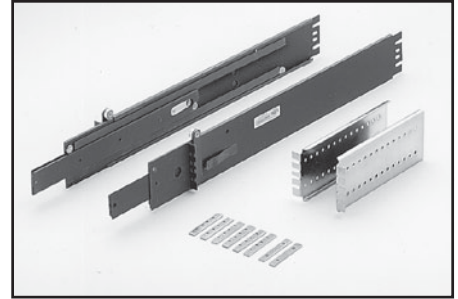
Model 7002-RMK-1 Fixed Rack Mount Kit: Two 7 in. flanged brackets and hardware for mounting the Model 7002 in a standard 48.3cm (19 in) equipment cabinet. Can be used with Models 8000, 8000-10, 8000-14, or 8000-17.

For use with: 7002



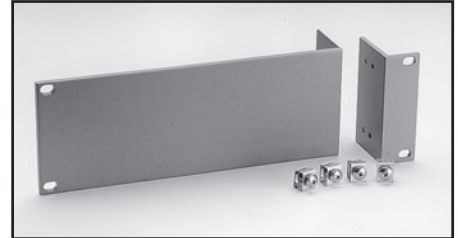
Model 7002-RMK-2 Slide Rack Mount Kit: Two sets of flanged brackets, slides, and hardware to mount Model 7002 in standard 48.3cm (19 in) equipment cabinet. Can be used with Model 8000.

For use with: 7002



Model 7079 Slide Rack Mount Kit: Two sets of flanged brackets, slides, and hardware to mount Model 707A in standard 48.3cm (19 in) equipment cabinet. Can be used with Model 8000.

For use with: 707A



Model 7768: Single fixed rack kit for mounting Model 776. Height: 88mm (3½ in).

For use with: 776

Cabinets, Other Accessories

Cabinets



Model 8000: A 28-inch high equipment cabinet that is open on both ends. It accepts all Keithley rack mounting kits as well as most rack kits provided with other instrumentation. The dark brown 8000 comes fully assembled, with handles permanently installed on each side. One hundred chrome Phillips head screws with mylar washers and clip nuts are provided for instrument mounting. Rack mounting kits are available separately.

DIMENSIONS: 711mm high × 483mm wide × 533mm deep (28 in × 19 in × 21 in).



Model 8000-10: A standard 10-inch high, 19-inch wide equipment cabinet for enclosing instrumentation for bench or automated test system application. The Model 8000-10 accepts most Keithley mainframe models and fixed rack mount kits. The cabinet is supplied with rubber feet for benchtop applications, and the sturdy steel construction will support additional instrumentation stacked on top.

DIMENSIONS: 254mm high × 483mm wide × 533mm deep (10 in × 19 in × 21 in).



Model 8000-14A: A standard 14-inch high, 19-inch wide equipment cabinet for enclosing instrumentation for bench or automated test system application. The Model 8000-14A accepts all Keithley mainframe models and fixed rack mount kits. The cabinet is supplied with rubber feet for benchtop applications including enclosure of the 707A Switching Matrix, and the sturdy steel construction will support additional instrumentation stacked on top.

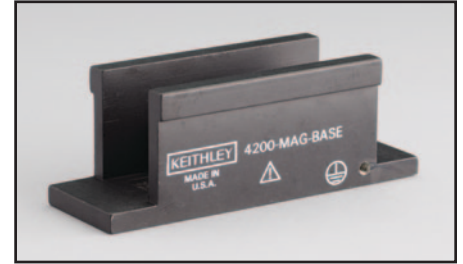
DIMENSIONS: 356mm high × 483mm wide × 648mm deep (14 in × 19 in × 25.5 in).



Model 8000-17A: A standard 17-inch high, 19-inch wide equipment cabinet for enclosing instrumentation for bench or automated test system application. The Model 8000-17A accepts all Keithley mainframe models and fixed rack mount kits. The cabinet is supplied with rubber feet for benchtop applications including enclosure of the 707A Switching Matrix, and the sturdy steel construction will support additional instrumentation stacked on top.

DIMENSIONS: 444mm high × 483mm wide × 457mm deep (17½ in × 19 in × 18 in).

Remote PreAmp Mounting Accessories



Model 4200-MAG-BASE: Magnetic base for mounting the Model 4200-PA remote PreAmp option onto a probe station platen. (Two included with 4200-PIV-A to mount the remote bias tees onto a prober platen.)

For use with: 4200-SCS

Model 4200-TMB: Triax mounting bracket for mounting the Model 4200-PA remote PreAmp option onto a probe station or onto the triax mounting panel of a test fixture.

For use with: 4200-SCS



Model 4200-VAC-BASE: Vacuum base for mounting the Model 4200-PA remote PreAmp option onto a probe station platen.

For use with: 4200-SCS

Distributed by:
www.SignalTestInc.com
 1529 Santiago Ridge Way
 San Diego, CA 92154 USA.
Sales@SignalTestInc.com

SIGNAL TEST[™]
 New & Used Test Equipment